

# Kiuwan Governance Doc

This guide will introduce you to the Kiuwan Governance Module.

## Contents:

- [Governance Summary](#)
- [Decision quadrants](#)
- [Evolution](#)
- [Activity](#)
- [Ranking](#)
- [Crossings](#)
- [Custom Reports](#)

## Introduction to Kiuwan Governance



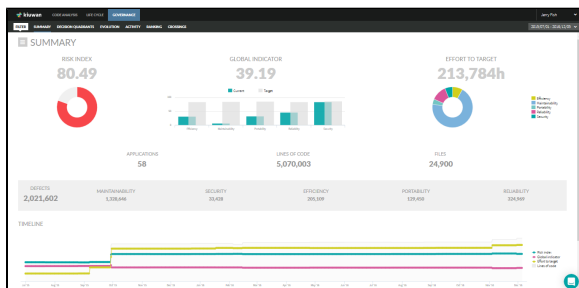
Kiuwan Governance has been designed for **Security/QA Engineers or IT Managers**.

It shows grouped results of the analyses performed on the account code grouped by portfolios; a piece of essential information for managing the applications at an executive level.

There are four default portfolios to help you manage your providers or development teams activity:

1. **Business value**
2. **Provider**
3. **Technology**
4. **Quality Model**

Besides, you can create all the portfolios you need to sort your applications.



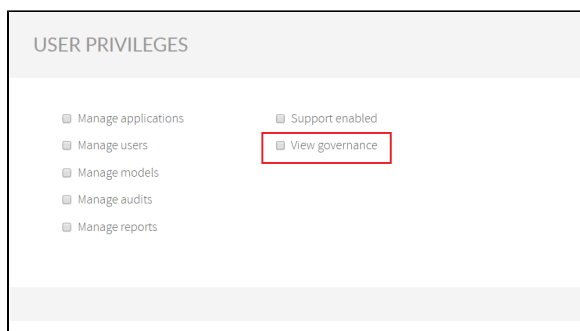
## Permissions to access Governance module

By default, only an Account Owner can access the Governance module.

However, **the account owner can grant access to the Governance module to any user**. In User Management, select the user and click on **User privileges** and select **View governance**.



**IMPORTANT:** By granting **View governance** privilege, the user is allowed to access the Governance module, but he/she will **only see aggregated data from those applications that have "Read" permission**.



Please visit [User management - Set administration privileges](#) for help on managing administration permissions.