

Engine Metadata Files Customization

KLA allows you to define and modify custom metadata files. This tool helps you to ease the process of finding existing metadata files, creating, and editing custom metadata.

In addition, this tool helps the configurator to see KLA configuration path indicating if they are custom or default (read-only), filter them by language and framework, and search by class, method, and function.

This configurator guides you with tooltips, examples, and any checks or necessary validations. It shows you the process of adding all mandatory elements and attributes.

- [Types of custom metadata files](#)
- [Create a new metadata file](#)
 - [Custom Configuration for Current Application](#)
 - [Add an element](#)
 - [Add Another Element](#)
 - [Define the attributes of an element](#)
 - [Save the new file](#)
- [Edit a Metadata File](#)
- [Search](#)

Types of custom metadata files

Custom metadata files can be configured at three levels. These levels are in order of precedence, the higher ones take precedence over the lower ones. Review [Precedence and scope of configurations](#).

For more information about metadata details and definition, review [Custom Neutralizations](#).

Create a new metadata file

In the Analysis Configuration, click **Customize Metadata**, and select **New**.



Create a new metadata file by selecting the specific scope for your file, choosing the location, the language, or the associated programming language with the file, and typing a name for the file.

- **Location**
Select a **location** for saving the new metadata file.
 - **Custom configuration for current application:** Select this location to save the metadata file in the folder where the custom configuration files for the current application are stored
 - **Current application basedir analysis:** Select this location to save the metadata file in the folder identified for the current application's basedir analysis
 - **Other:** Select this location to save the metadata file in the folder of your preference.
- **Language**
Select from the drop-down list the language to associate the files to a programming language.
- **Name**
Specify a filename for the new metadata file. Notice that all metadata files are saved as XML, and they should follow the correct format, for example:
metadata_custom_<framework-name | library_name>.xml

Custom Configuration for Current Application

The screenshot shows the 'Current application baseline analysis: example.xml' window. The 'Tree view' on the left shows the 'library_database' schema selected. The 'Data' tab is active, displaying the XML content:

```
<?xml version="1.0" encoding="UTF-8"?>
<library_database xmlns="http://www.godiyh.com/schema/definitions/library_metadata" xmlns:uri="http://www.w3.org/2001/XMLSchema-instance" uri="http://www.google.com"/>
<library_database>
```

The 'Attribute' table at the bottom shows the following data:

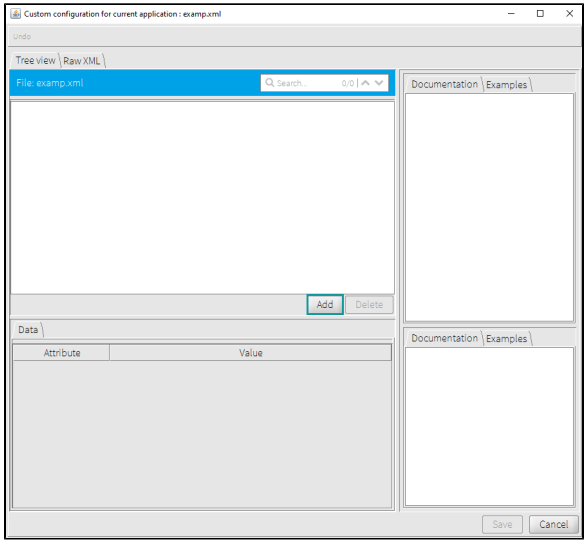
Attribute	Value
name	xml
standard	
technology	java

Name	Action
"Tree View"	Default hierarchical display of the metadata items in the file.
"Raw XML"	Display of the metadata in XML format.
Filename text box	Type a string to search and view the number of occurrences of the specified string. This can be a token - class, method, and function.
< or >	To go to the previous or next occurrence of the string.
Add	To add an entry
Delete	To delete an entry
View "Documentation" and "Examples"	To ensure that you make a well-informed and correct metadata entry in the file.

Undo	To ignore the changes, you have made.
------	---------------------------------------

Add an element

To start adding your elements, click **Add** in the **Tree View** tab.



When the **Add element** dialog displays, select an element, and click **Add**.

[blocked URL](#)

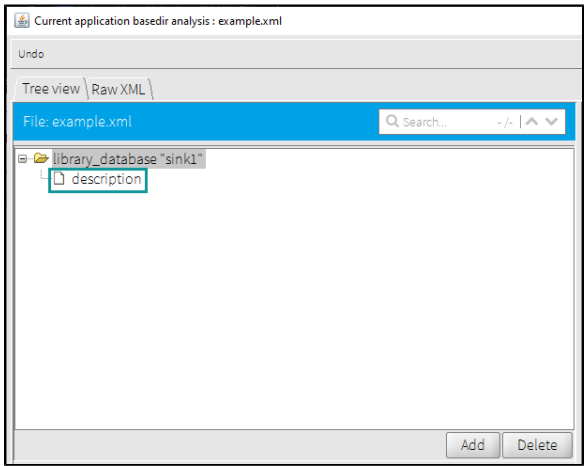
Add Another Element

Click **Add** in the dialog to add another element to the file.

[blocked URL](#)

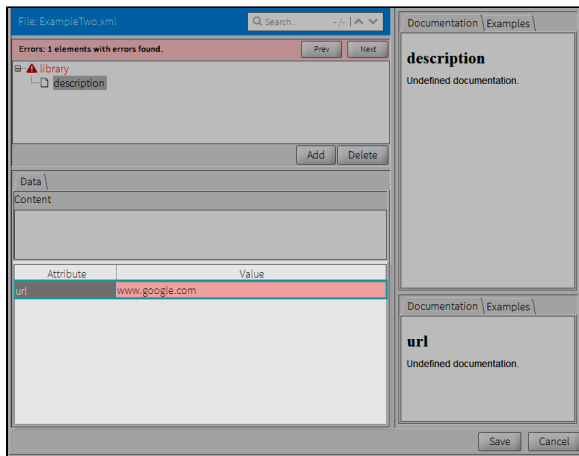
This example shows the available elements for **/library** that can be defined in the metadata file.

To add the **description** element to the XML file, select the element, and click **Add**. The element displays in the main tree view.

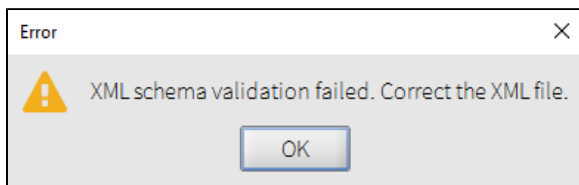


Define the attributes of an element

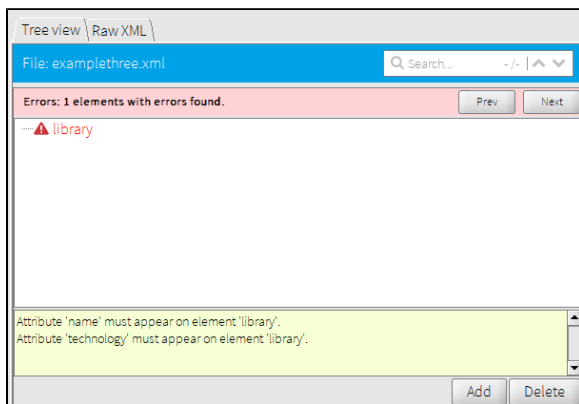
You can define the attributes by adding the value which is located next to the attribute name and clicking **Save**.



It is important to verify your element status and values to save your changes; otherwise, you cannot complete the action and the following message displays:



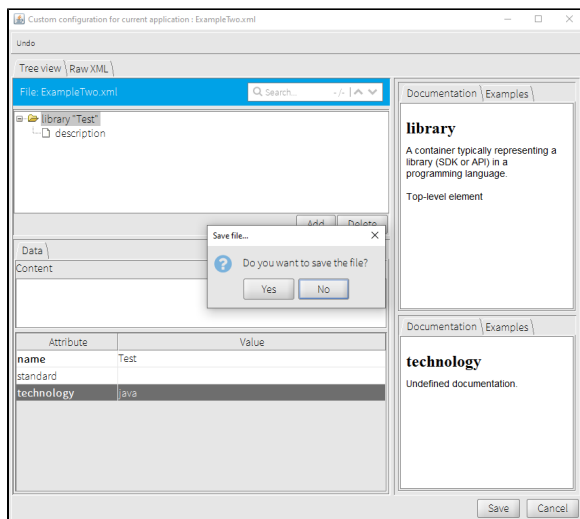
Also, the metadata editor shows the errors until the mandatory attributes are filled. These errors are flagged by a message as well as an alert icon.



This example shows that the item library is invalid because some mandatory attributes have not been filled. The item "Library" is invalid because it needs the required attributes: 'name' and 'technology'

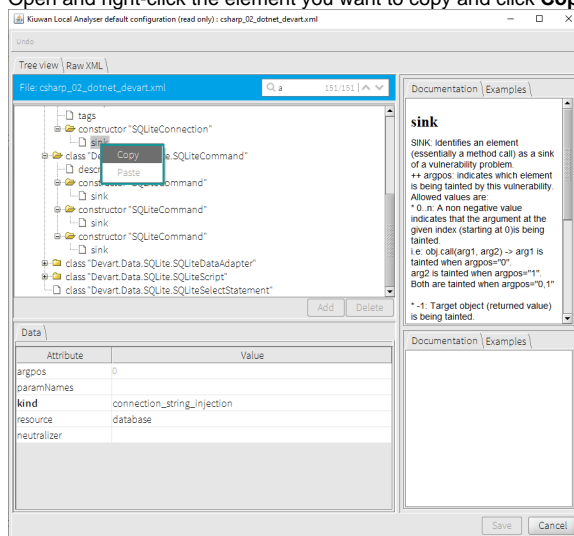
Save the new file

When you finish adding elements with the correct values and attributes, click **Save**, and click **Save** once more on the confirmation message to complete this action.



In addition to adding other elements, you can copy and paste them in a different location

1. Open and right-click the element you want to copy and click **Copy**.



2. Open the target file and select the element where you want to paste it.

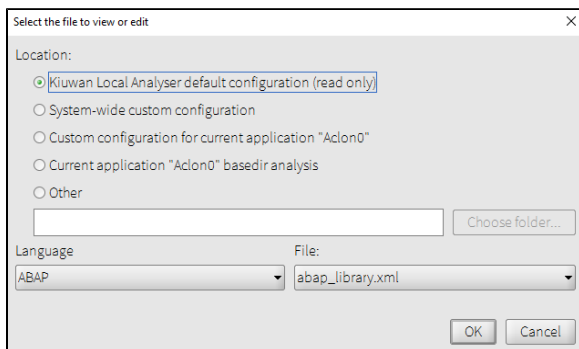
Edit a Metadata File

Kiwan Local Analyzer allows you to edit your custom Metadata Files. The edited custom metadata files are saved in XML format in your selected location.

In the **Analysis Configuration** dialog, click the **Customize Metadata** tab, and select **Edit**.



Set the location of the files to be edited, filter them by language, and other options. Below, find more information about the parameters when editing a metadata file:



- **Location**

Set the location of the files you want to edit, the available options under this criteria are the following:

- **Kiuwan Local Analyser default configuration (read-only):** View the content of the files in this location and use them for analysis purposes.
- **Systemwide Custom configuration:** View and edit the related files.
- **Custom configuration for current application:** View and edit the files in this location.
- **Current application basedir analysis:** View and edit the files in this location.
- **Other:** View and edit metadata files in your available folders.

- **Language**

Filter your metadata files by language and select from the drop-down list the language associated to your file.

- **Name**

Lists all the metadata files under your filter criteria.

Select this location to save the metadata file in any folder of your choice.

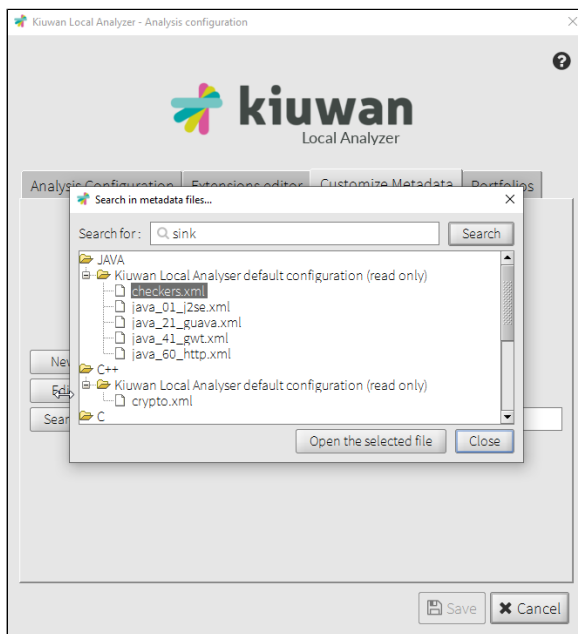
Search

This feature eases searches at multiple levels to locate specific data.



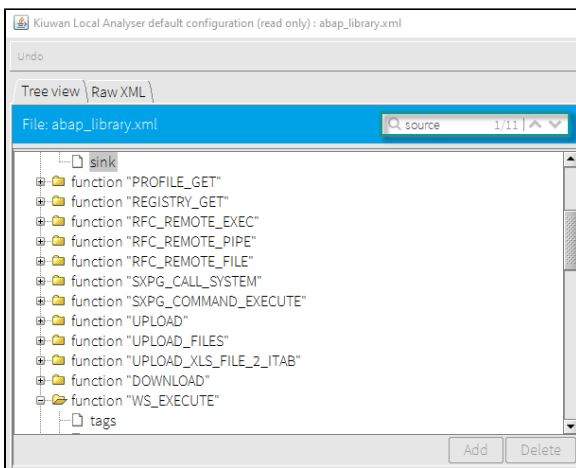
Under the **Customize Metadata**, the **Search** option gives the result of your performed search:

- Type a search value in the **Search** for box and click **Search**. The entire tree view of files is shown



Once you selected the file, click **Open the selected file** to display the results on the **Tree view /Raw XML** dialog.

The search field shows the number of results found for your search, use the two arrows (next and previous) 1/11 to browse among your results.



- Enter the name of your file and click **Search**. This action opens up the **Tree view/Raw XML** dialog of the file where you can edit the values of the attributes, or add other elements. Otherwise, for Kiuwan Local Analyzer default configuration, the file opens in read-only mode.

When editing or searching a file, it is possible to have several **Tree view/Raw XML** dialogs open at the same time.