

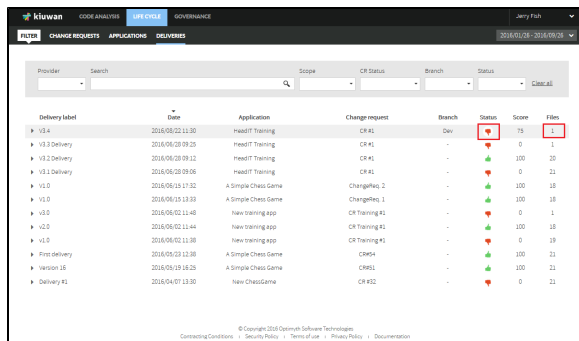
# Deliveries Audit and Defects

This guide shows you how to manage the defects of delivery audits.

## Contents:

- [Deliveries Audit](#)
- [Deliveries Files](#)
- [Deliveries Defects](#)

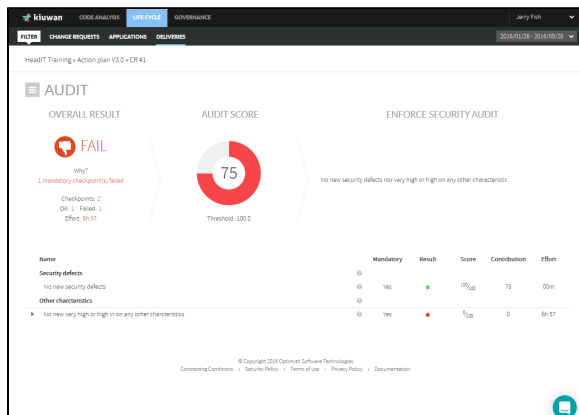
To access the **Delivery Details** module for every delivery, click the **Status** icon or the **Files** link as shown below.



Provider	Search	Scope	CR Status	Branch	Status	Score	Files
▼ V3.4	2018/08/22 13:30	HeadIT Training	CR #1	Dev	👍	75	1
▼ V3.3 Delivery	2018/08/28 09:20	HeadIT Training	CR #1	-	👍	0	1
▼ V3.2 Delivery	2018/08/28 09:12	HeadIT Training	CR #1	-	👍	100	20
▼ V3.1 Delivery	2018/08/28 09:06	HeadIT Training	CR #1	-	👍	0	21
▼ V1.0	2018/06/18 17:32	A Simple Chess Game	ChangeReq. 2	-	👍	100	18
▼ V1.0	2018/06/18 13:59	A Simple Chess Game	ChangeReq. 1	-	👍	100	18
▼ V2.0	2018/06/02 11:40	New training app	CR Training #1	-	👍	0	1
▼ V2.0	2018/06/02 11:44	New training app	CR Training #1	-	👍	100	18
▼ V2.0	2018/06/02 11:38	New training app	CR Training #1	-	👍	0	18
▼ First delivery	2018/09/18 12:38	A Simple Chess Game	CR#1	-	👍	100	21
▼ Version 1.6	2018/09/18 18:29	A Simple Chess Game	CR#1	-	👍	100	21
▼ Delivery #1	2018/04/07 13:30	New ChessGame	CR #102	-	👍	0	21

## Deliveries Audit

Click the **Status icon** (thumbs up or down) of a delivery to open the **Audit Results** for that delivery.



Please visit [Audits Management - AuditResultsPage](#) for details on Audit Results.

## Deliveries Files

Open the **drop-down menu** next to the Files title and select **Files** to open the **Files details** for that delivery.

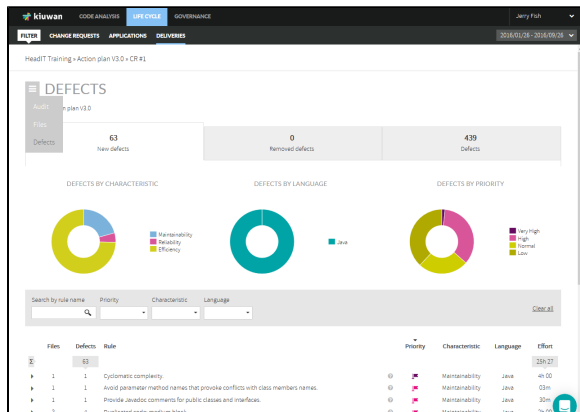
Files	Lines of code	Global indicator	Defects	New defects	Effort(h)	New effort(h)
src/main/java/com/sebaco/core/Board.java	227	37.97	96	0	32h 43	00m
src/main/java/com/sebaco/core/Chess.java	222	78.48	8	0	9h 23	00m
src/main/java/com/sebaco/core/ChessGame.java	89	42.2	64	0	18h 47	00m
src/main/java/com/sebaco/core/King.java	89	40.23	37	0	16h 26	00m
src/main/java/com/sebaco/core/KingTest.java	86	51.06	39	0	11h 14	00m
src/main/java/com/sebaco/core/Queen.java	79	89.27	7	0	10m	00m
src/main/java/com/sebaco/core/QueenTest.java	68	83.86	21	0	11h 12	00m
src/main/java/com/sebaco/core/Throne.java	87	43.97	40	0	13h 26	00m
src/main/java/com/sebaco/core/ThroneTest.java	68	70.94	23	0	00m	00m
src/main/java/com/sebaco/core/ThroneGame.java	84	54.51	23	0	12h 08	00m
src/main/java/com/sebaco/core/ThroneTest.java	61	52.89	18	0	13h 36	00m
src/main/java/com/sebaco/core/ThroneGameTest.java	98	62.61	23	0	00m	00m
src/main/java/com/sebaco/core/Square.java	31	76.74	4	0	00m	00m
src/main/java/com/sebaco/core/ThroneGameTest.java	29	99.83	11	0	9h 06	00m
src/main/java/com/sebaco/core/ThroneGameTest.java	28	47.77	10	0	00m	00m
src/main/java/com/sebaco/core/ThroneGameTest.java	25	76.59	18	0	9h 12	00m
src/test/java/com/sebaco/core/ThroneGameTest.java	207	99.99	3	0	00m	00m
src/test/java/com/sebaco/core/ThroneGameTest.java	14	100	0	0	00m	00m
src/main/java/com/sebaco/core/ThroneGameTest.java	6	89.83	5	0	0h 45	00m
src/main/java/com/sebaco/core/ThroneGameTest.java	6	46.51	6	0	9h 00	00m

This screen displays a complete list of files included in the delivery. For every file, it shows absolute metrics of that file (lines of code, global indicator, number of defects and associated effort to target). Also, it shows metrics relative to the same file when it was analyzed as part of the application baseline:

- New defects: number of new defects of this file as compared to defects when analyzed as part of the baseline
- New effort: effort associated with these new defects

## Deliveries Defects

Open the **drop-down menu** next to the Files title and select **Defects** to open the **Defects details** for that delivery.



The defects page shows detailed information on delivery's defects.

Information is organized in three sections (**New defects**, **Removed defects**, and **Defects**), visually displayed as tabs.

If there is no baseline analysis for your delivery, all defects will appear as **new defects**.

The **New defects** section shows the total number of new defects that the delivery has introduced in the application (as compared to baseline). These new defects may come from two sources:

- defects found in the delivery files that did not appear when were analyzed in the baseline, and
- defects found in new files, i.e. files that were not part of the baseline

The **Removed defects** section shows the total number of defects that this delivery has removed from the baseline. The scope of the delivery affects how removed defects are calculated:

- In the case of a Partial delivery, removed defects calculus is based on the comparison between the defects found in the delivery files and defects of the same files when analyzed in the baseline.
- In case of a Complete delivery, removed defects will also include those defects of files that were analyzed in the baseline but are not part of the delivery. As the delivery is complete, the analysis assumes that those files are not part of the application any more so their associated defects have been implicitly removed.

The **Defects** section shows the total number of defects found in the delivery files.

Clicking any of those defects tabs to see complete detail on defects.

