

# Deliveries Management

This page will explain the Life Cycle dashboard.

## Contents:

- [Life Cycle Dashboard](#)
- [Change Request](#)
- [Applications](#)
- [Deliveries](#)
  - [Monitoring the execution of deliveries](#)

## Life Cycle Dashboard

The screenshot shows the Kiuwan Life Cycle Dashboard. At the top, there are tabs for 'ENTER', 'CHANGE REQUESTS', 'APPLICATIONS', and 'DELIVERIES'. Below the tabs is a search bar with fields for 'Provider', 'Scope', 'CR Status', 'Branch', and 'Status'. The main table displays a list of change requests with columns for 'Change request', 'Date', 'Duration', '# Deliveries', '# Applications', '# OK deliveries', '# Failed deliveries', '# In progress deliveries', '# Resolved deliveries', 'Status', and 'Score'. The table lists several change requests, including CR#4, CR#4#2, CR#4#3, CR#4#4, CR#4#5, CR#4#6, CR#4#7, CR#4#8, CR#4#9, CR#4#10, CR#4#11, CR#4#12, CR#4#13, CR#4#14, CR#4#15, CR#4#16, CR#4#17, CR#4#18, CR#4#19, CR#4#20, CR#4#21, CR#4#22, CR#4#23, CR#4#24, CR#4#25, CR#4#26, CR#4#27, CR#4#28, CR#4#29, CR#4#30, CR#4#31, CR#4#32, CR#4#33, CR#4#34, CR#4#35, CR#4#36, CR#4#37, CR#4#38, CR#4#39, CR#4#40, CR#4#41, CR#4#42, CR#4#43, CR#4#44, CR#4#45, CR#4#46, CR#4#47, CR#4#48, CR#4#49, CR#4#50, CR#4#51, CR#4#52, CR#4#53, CR#4#54, CR#4#55, CR#4#56, CR#4#57, CR#4#58, CR#4#59, CR#4#60, CR#4#61, CR#4#62, CR#4#63, CR#4#64, CR#4#65, CR#4#66, CR#4#67, CR#4#68, CR#4#69, CR#4#70, CR#4#71, CR#4#72, CR#4#73, CR#4#74, CR#4#75, CR#4#76, CR#4#77, CR#4#78, CR#4#79, CR#4#80, CR#4#81, CR#4#82, CR#4#83, CR#4#84, CR#4#85, CR#4#86, CR#4#87, CR#4#88, CR#4#89, CR#4#90, CR#4#91, CR#4#92, CR#4#93, CR#4#94, CR#4#95, CR#4#96, CR#4#97, CR#4#98, CR#4#99, CR#4#100. The table also shows the status of each delivery, with green arrows indicating successful deliveries and red arrows indicating failed deliveries. The footer of the dashboard includes the Kiuwan logo and copyright information.

Change request	Date	Duration	# Deliveries	# Applications	# OK deliveries	# Failed deliveries	# In progress deliveries	# Resolved deliveries	Status	Score
CR#4	2016/06/12 11:30	132m	4	1	1	3	1	3	🔴	0.75
CR#4#2	2016/06/12 17:30	00m	1	1	1	0	0	1	🟢	1
CR#4#3	2016/06/12 18:33	00m	1	1	1	0	0	1	🟢	1
CR#4#4	2016/06/12 11:48	10m	3	1	1	2	0	3	🔴	0
CR#4#5	2016/06/12 12:38	00m	1	1	1	0	0	1	🟢	1
CR#4#6	2016/06/12 18:28	00m	1	1	1	0	0	1	🟢	1
CR#4#7	2016/06/12 18:30	00m	1	1	0	1	0	1	🔴	0

This page displays information on existing deliveries, allowing you to take action on them.

It is possible to search for deliveries specifying different search criteria:

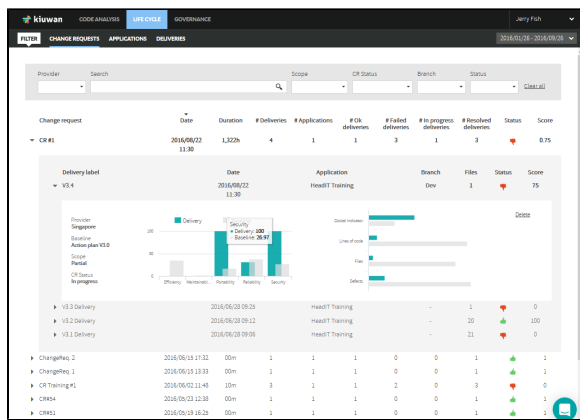
Name	Description
Date range	Search deliveries launched within a date range (using From and To date fields)
Provider	Search deliveries that belong to the selected providers.
Scope	Search by "Complete" or "Partial" deliveries
CR Status	Search by "In progress" or "Resolved" deliveries
Branch	In case you specify the branch name, this selector will present you available brach names to search for
Status	This selector allows to search deliveries based on Audit status ( OK or Failure)

## Change Request

Select **Life Cycle > Change Requests** to display deliveries grouped by the Change Request they belong to.

This option would be useful, for example, when you need to know how many deliveries are associated with a CR (providing an indicator of the quality of the delivery process).

For every CR, Kiuwan displays information as shown in the picture.



Kiuwan will display deliveries ordered by the analysis date. The CR records display information on the last delivery for that CR.

Click the triangle icon on the left of each CR to open a complete list of the deliveries of the CR.

The details of every delivery are displayed when clicking on the triangle icon at the left of each delivery.

The following information is presented for every delivery:

- Associated Change Request, Delivery Label, Branch and analysis Date
- Status: the result of Audit (Ok or Fail, thumb up / down icon)
- Score: overall delivery compliance with the defined audit (please visit [Audits Management - AuditApprovalThreshold](#) for further info on audit score)
- Files: number of files of the delivery

Click the triangle icon on the left of each delivery to display further information.

Detailed information provides useful information to compare analysis results of delivery versus baseline. It provides a comparison between the delivery and the baseline

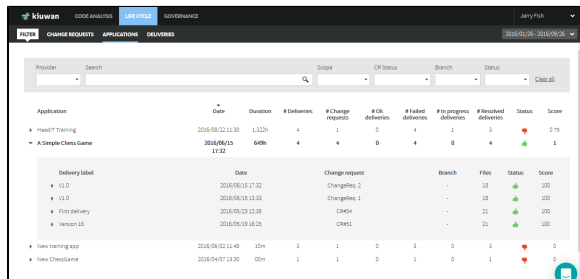
- Quality Indicator of delivery versus baseline for every characteristic
- Global Quality indicator, lines of code, number of files and number of defects

The delete link allows you to remove the delivery analysis from Kiuwan.

## Applications

Select **Life Cycle > Applications** to display deliveries grouped by the application they belong to.

For every application, Kiuwan will display information as shown in the picture.



Application records display information on the last delivery for that application. **# Deliveries** shows the total number of deliveries of that application.

Click the triangle icon on the left of each application to open a complete list of deliveries of the application.

Click the triangle icon on the left of each delivery to display further details.

## Deliveries

Select **Life Cycle > Deliveries** to display a list of deliveries (for the selected date range) ordered by the analysis date.

For every application, Kiuwan will display information as shown in the picture.

Delivery label	Date	Application	Change request	Branch	Status	Score	Files
V1.4	2018/06/22 11:30	HeadT Training	CR #1	Dev	Failed	75	1
V1.3 Delivery	2018/06/20 09:25	HeadT Training	CR #1	-	Failed	0	1
V1.2 Delivery	2018/06/20 09:12	HeadT Training	CR #1	-	Success	100	20
V1.1 Delivery	2018/06/20 09:05	HeadT Training	CR #1	-	Failed	0	20
V1.0	2018/06/15 17:32	A Simple Chess Game	ChangeReq. 2	-	Success	100	18
V1.0	2018/06/15 13:33	A Simple Chess Game	ChangeReq. 1	-	Success	100	18
V1.0	2018/06/12 11:45	New training app	CR Training #1	-	Failed	0	1
V1.0	2018/06/12 11:44	New training app	CR Training #1	-	Success	100	18
V1.0	2018/06/12 11:39	New training app	CR Training #1	-	Failed	0	18
First delivery	2018/06/12 11:35	A Simple Chess Game	CR #1	-	Success	100	20
Version 1.6	2018/06/19 18:25	A Simple Chess Game	CR #1	-	Success	100	20
Delivery #1	2018/04/07 13:30	New ChessGame	CR #12	-	Failed	0	20

Click the triangle icon on the left of each application to open details on the selected delivery.

Delivery label	Date	Application	Change request	Branch	Status	Score	Files
V1.4	2018/06/22 11:30	HeadT Training	CR #1	Dev	Failed	75	1
V1.3 Delivery	2018/06/20 09:25	HeadT Training	CR #1	-	Failed	0	1
V1.2 Delivery	2018/06/20 09:12	HeadT Training	CR #1	-	Success	100	20
V1.1 Delivery	2018/06/20 09:05	HeadT Training	CR #1	-	Failed	0	20
V1.0	2018/06/15 17:32	A Simple Chess Game	ChangeReq. 2	-	Success	100	18
<b>V1.0</b>	<b>2018/06/15 13:33</b>	<b>A Simple Chess Game</b>	<b>ChangeReq. 1</b>	-	<b>Success</b>	<b>100</b>	<b>18</b>

**Provider:** Chas factory  
**Static:** Reading analysis  
**Score:** Complete  
**CR Status:** Resolved

**Score history:** [Bar chart showing score trends]  
**Code of diff:** [Bar chart showing code differences]  
**Files:** [Bar chart showing file counts]  
**Delta:** [Bar chart showing delta values]

## Monitoring the execution of deliveries

The above tabs display deliveries or analyses that finished without any technical error condition.

But with the Deliveries tab, it is possible to view information about **failed** and **in progress** delivery analyses.

- Failed = the analysis failed for some reason (check the log to see the exact reason), and there will not be any results for it.
- In progress = the local analysis finished but the second phase (performed at the cloud) is still executing.

**Provider:** [Dropdown]  
**Scope:** [Dropdown]  
**CR Status:** [Dropdown]  
**Branch:** [Dropdown]  
**Score:** [Dropdown]

**Delivery label**   **Date**   **Application**   **Change request**   **Branch**   **Files**   **Status**   **Score**

-	2018/06/19 11:40	SAS-1501	ci-6	-	20	In Progress	100
---	------------------	----------	------	---	----	-------------	-----

This message only appears when there are deliveries that are either In progress or Failed. Click on the legend to display a page where you can see the details of those deliveries.

For every delivery, you can see the **status** (running or failed). Also, you can access the **log** page and/or **delete** the current analysis.

Date	Application	Change request	Delivery label
2018/09/19 02:09	_SAS-2099	GC8	_SAS-2099
2018/09/19 22:55	_SAS-2099	ci-6	_SAS-2099
2018/09/24 16:42	_SAS-2099	ci-7	_SAS-2099

**Actions:** Log Details, Log Details, Log Details

Click **Back to completed deliveries** to go back to the Deliveries tab.