

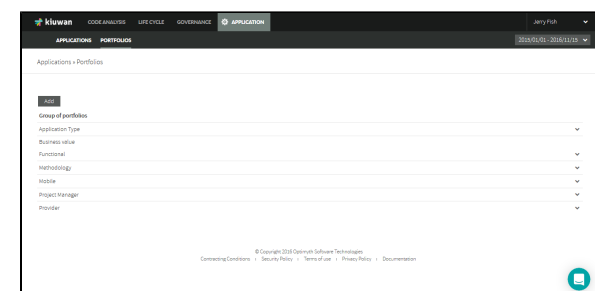
# Portfolio management

This page explains how to manage the account's application portfolios.

**Contents:**

- [Add a new portfolio](#)
- [Edit a portfolio](#)
- [Delete a portfolio](#)

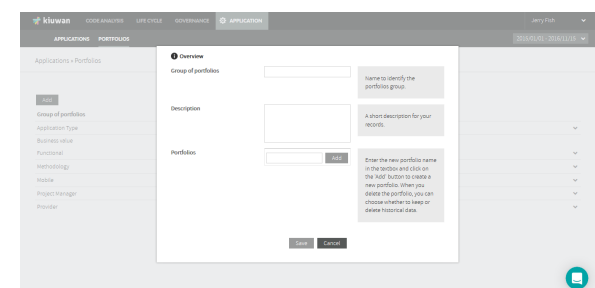
To access the page, go to the **drop-down menu** on the top-right and select **Application Management > Portfolio**



## Add a new portfolio

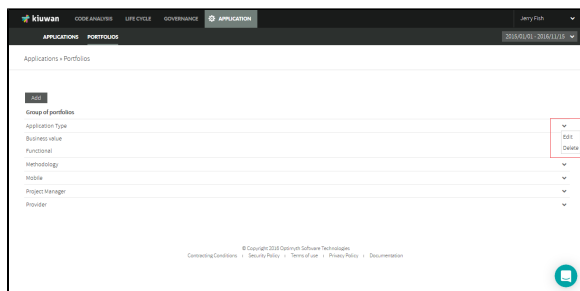
Click **Add** and a new pop-up window appears. This new screen is divided into three sections:

Name	Description
Group of portfolios	The name of the portfolio group
Description	Description of the use of this portfolio group
Portfolios	This field allows you to enter new portfolio values in the text box. Click <b>Add</b> to create it. You can set identical values for different portfolios. Once a value is added, <b>Delete</b> appears to delete it if needed.



## Edit a portfolio

To add new values to a portfolio group or remove existing ones, open the **drop-down menu on the right** and select **Edit**.



## Delete a portfolio

The **Delete** action allows you to delete a portfolio group.