

Deliveries Promotion to Baseline

This guide will explain how to promote deliveries to a baseline.

Deliveries Promotion to Baseline

Deliveries can be "promoted" to baseline without the need to run a new analysis.

To **promote a delivery to a baseline** means that a **new baseline will be calculated based on delivery analysis results**.

This new baseline will be calculated differently depending on the delivery scope.

If the delivery is **Complete**, new baseline indicators will be calculated based completely on delivery defects, i.e. not taking into account any previous baseline analysis.

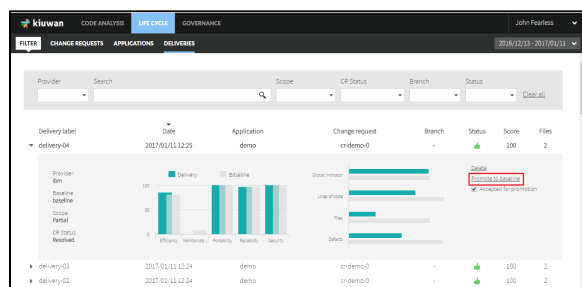
If the delivery is **Partial**, new baseline indicators will be **incrementally** calculated as follows:

- For any new file contained in the delivery (i.e. not existing in the baseline), the file and associated defects will be included as part of the new baseline.
- For every file contained in the delivery and the baseline, defects found during the delivery analysis will overwrite defects found when analyzed in the baseline
- For those files contained in the baseline but not included in the delivery, previous defects will be maintained

Deliveries promotion to Baseline can be done either using the **Kiuwan Deliveries page** or using **Kiuwan Local Analyzer in Command-Line Interface mode**.

This section describes how to do it using the Kiuwan Deliveries page.

For help on how to do it using the Kiuwan Local Analyzer CLI, please visit [Kiuwan Local Analyzer](#).



i The promotion is not restricted to successful deliveries. If you want to promote a failed delivery you are allowed to do it.

Check the **Accepted for promotion** checkbox, and the promotion for this delivery will be enabled.

By default, only deliveries with status OK has the Accepted for promotion enabled.



Once you click **Promote to baseline**, you are asked for a new label for the baseline. By default, the delivery label is proposed.

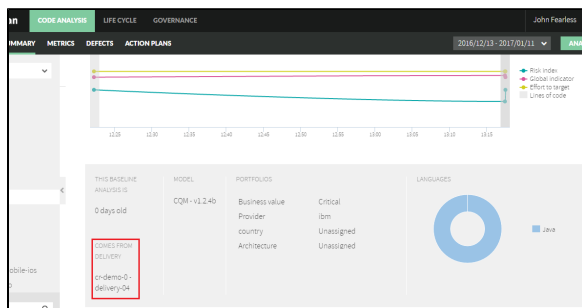
The screenshot shows a dialog box titled 'Promote to baseline'. It has a 'Label' field with 'demo-0' entered. Below the field are three buttons: 'Promote to baseline', 'Promote all candidates to baseline', and 'Cancel'.

Promote to baseline = the selected delivery will be used to generate the new baseline.

Promote all candidates = all deliveries with **Accepted for promotion** enabled will be used. The deliveries are grouped by provider, and a new baseline will be generated for each provider.

Following deliveries (by provider) will be promoted:			
Provider	Change request	Delivery label	Date
ibm	cr-demo-0	delivery-04	2017/01/11 12:25
indra	cr-demo-0	delivery-03	2017/01/11 12:24
	cr-demo-0	delivery-02	2017/01/11 12:24
	cr-demo-0	delivery-01	2017/01/11 12:23
<div>Promote to baseline Cancel</div>			

The promotion analysis is added to an execution queue. Once it is finished, the results are shown in the application Dashboard as a new baseline analysis. This analysis will contain a legend that indicates that the baseline comes from a delivery analysis.



Only deliveries done on the last baseline can be promoted to a new baseline. The other deliveries will have the **Promote to baseline** link disabled.

If your delivery does not have a related baseline analysis, it can also be promoted.