

Local use - In-Progress Deliveries

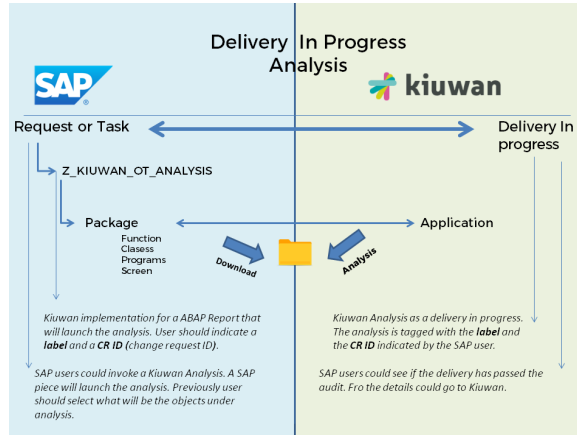


Contents:

- [Kiuwan analysis for Change Requests / Tasks "in progress"](#)

Kiuwan analysis for Change Requests / Tasks "in progress"

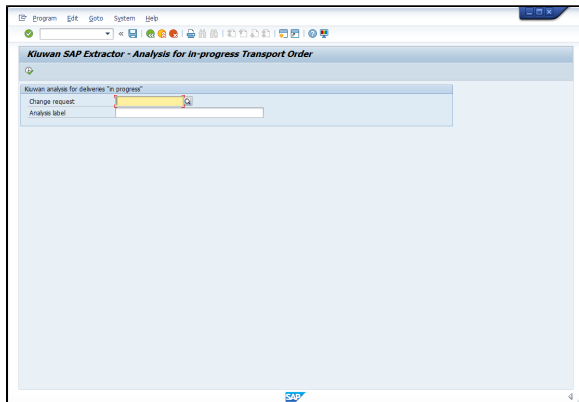
You can analyze a Change Request previously before its release. The process can be depicted as follows:

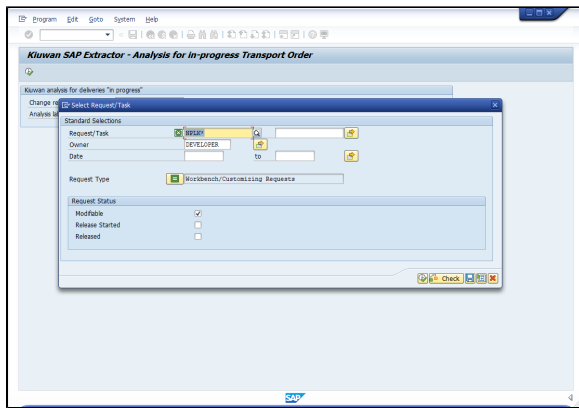


When the Kiuwan Local Analyzer is deployed in the SAP system, you may analyze a Change Request (or Task) currently in progress.

To do it, execute program **ZKW_ANALYSIS_TO** (using transaction **SA38**)

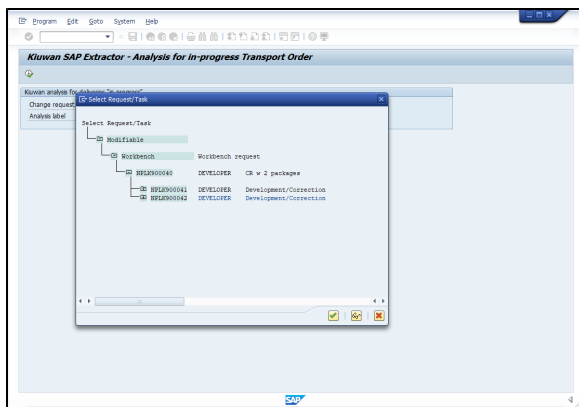
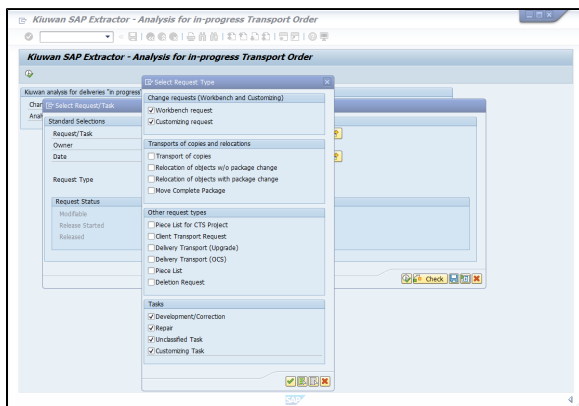
Specifying a Change Request (CR) or Task ID, and an Analysis Label, to download and analyze the associated source code in the SAP system.



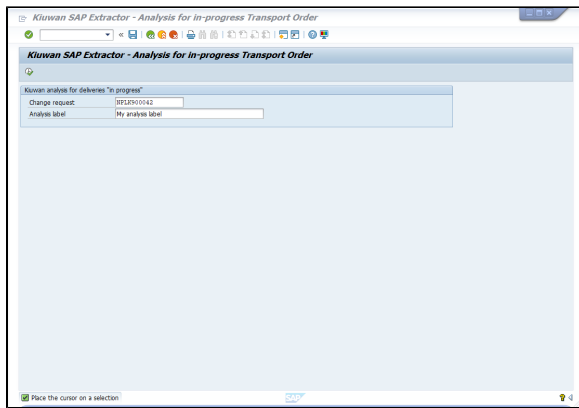


You can select either a **Request** or a **Task**.

Note: If you are selecting a task, be sure you select the correct task type.



Once you have selected your Request/Task ID, specify a **Label** for your analysis (so you can find it easily later in the Kiuwan website).



After clicking the **Execute** button, the analysis process will be executed as described below:

1. The source code associated to Request/Task is downloaded
 - a. Download directory is `<DIR_HOME>/sape4k/code/<ReqTask_ID>` (you can use `AL11` transaction to inspect `DIR_HOME` value)
 - i. in linux, typically `/usr/sap/<SAP_SID>/D<Instance_Number>/work`
 - ii. in windows, change `/` by `<drive>:\`
 - b. Under `<DIR_HOME>/sape4k/code/<ReqTask_ID>`, there will be a directory for every SAP Package involved in the CR/Task
 - c. **Important:** Only "Active" objects will be exported and analyzed
2. For every SAP package contained into the Request/Task, a Kiuwan analysis is executed
 - a. using SAP package name as Kiuwan application name (`-n <SAP_package_name>`, see [Kiuwan Local Analyzer CLI - Command Line Interface](#))
 - b. using `<DIR_HOME>/sape4k/code/<ReqTask_ID>/<SAP_Package_Name>` as source dir (`-s <DIR_HOME>/sape4k/code/<ReqTask_ID>/<SAP_Package_Name>`)
 - c. using Analysis label as Kiuwan analysis label (`-l <Analysis label>`)
 - d. the analysis is executed as a **Partial** Delivery (`-as partialDelivery`)
 - e. the analysis will use Request/Task ID as Kiuwan Change Request name (`-cr <Request /Task ID>`)
 - f. the delivery will be marked in Kiuwan as **In Progress** (`-crs inprogress`)
 - g. the analysis will wait for results (`-wr`) from Kiuwan cloud (i.e. it will be blocked until the cloud analysis finishes)
3. The process will analyze every SAP package unless an unsuccessful return code is received (`ret code != 0`)
 - a. In case of an unsuccessful analysis, the whole analysis stops and a window is displayed with an error message.
 - b. Bear in mind that a special case is when the Audit associated with the analysis of a package fails. This condition will also stop the whole analysis.

