

Manage Different Analyses in Kiuwan

This guide shows you how to manage the different analyses you have done with Kiuwan.
Content:

- [Open the analysis log of a specific analysis](#)
- [View all analyses](#)
- [Removing an analysis](#)

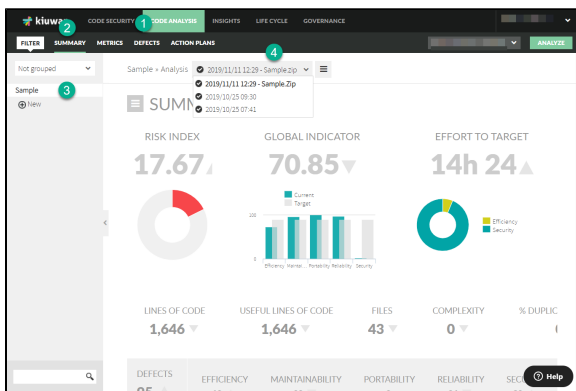
If you haven't done an analysis yet, find out here how to start a new analysis, with [Kiuwan Local Analyzer](#) or with the [Cloud Analyzer](#).

Once the analysis is finished, go through the following steps.

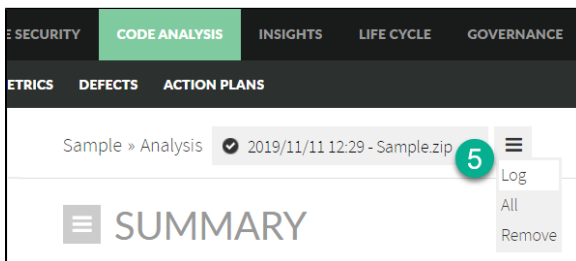
Open the analysis log of a specific analysis

Log into kiuwan.com.

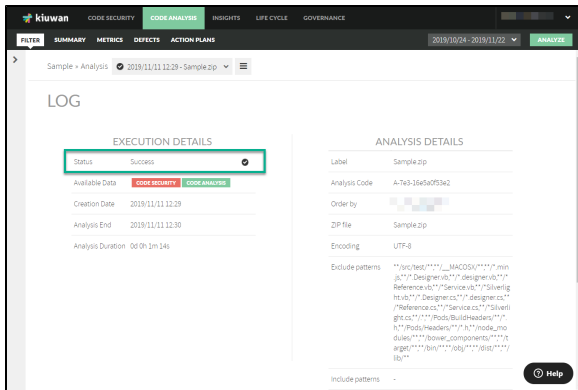
1. Select **Code Analysis** from the main menu.
2. Select **Summary**.
3. Select on the left menu the correct **application**.
4. Select from the drop-down menu **which analysis** you want to view.



5. Select **Log** from the hamburger menu.

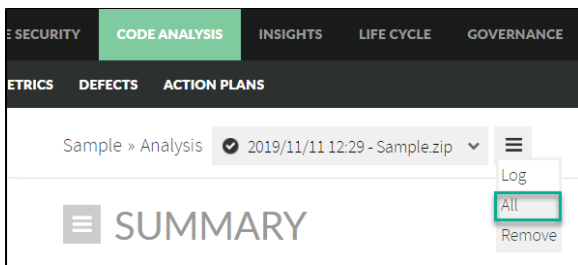


6. In the new window, you can see in the Status field if the analysis was successful or not.
 - a. If it failed, you will see an error code. Read more here at [Analysis Error Code Reference](#).

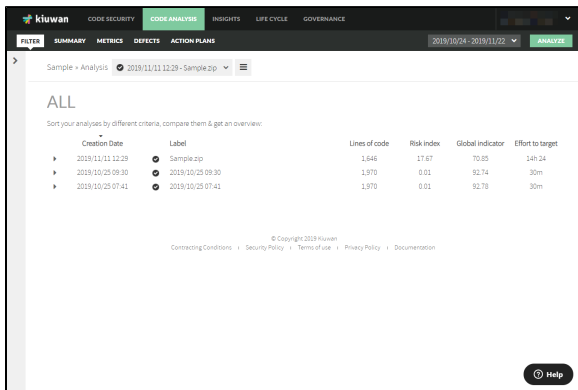


View all analyses

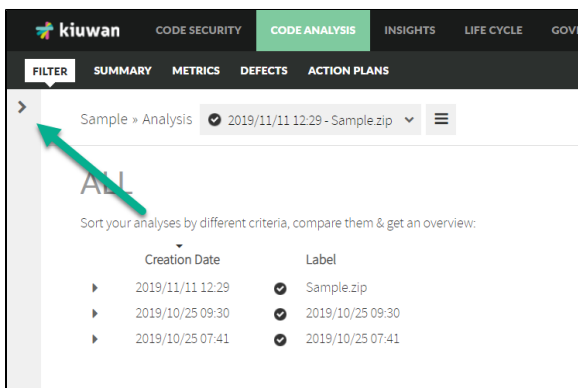
1. To see an overview of all analyses done on an application, select **All** from the hamburger menu



2. In the new window, you can see the complete list of analyses that were run on the selected application.



3. To select a different application, click on the arrow on the left.



By default, the list is sorted by date. To change the sort order, click a different column header. The list can be sorted by label, lines of code, risk index, quality indicator, or effort to target.

Click on a specific analysis to display the dashboard, which has useful data such as:

- The number of files in that application.
- The lines of code that application has.
- The values of the quality main indicators:
 - Effort to target
 - Quality indicator
- The position of that application in the ranking, depending on its quality value.
- The distance to the top, measured in quality.
- The date of the last analysis run.
- The quality model used in that last analysis.
- The value of the complexity by function.
- The number of defects found and the number of the ones muted, if any.
- The duplicated code ratio.
- The graphing of the quality main indicators mentioned above.
- The graphing of the distribution in languages of the lines of code.

Removing an analysis

Kiuwan gives you the possibility to remove an analysis from your dashboard. This may be useful if you have done a test analysis or if you want to erase an analysis you do not need anymore.



Removing an analysis is **permanent**. It cannot be undone.

To remove an analysis, select **Remove** from the hamburger menu.

