

Kiuwan Governance Doc

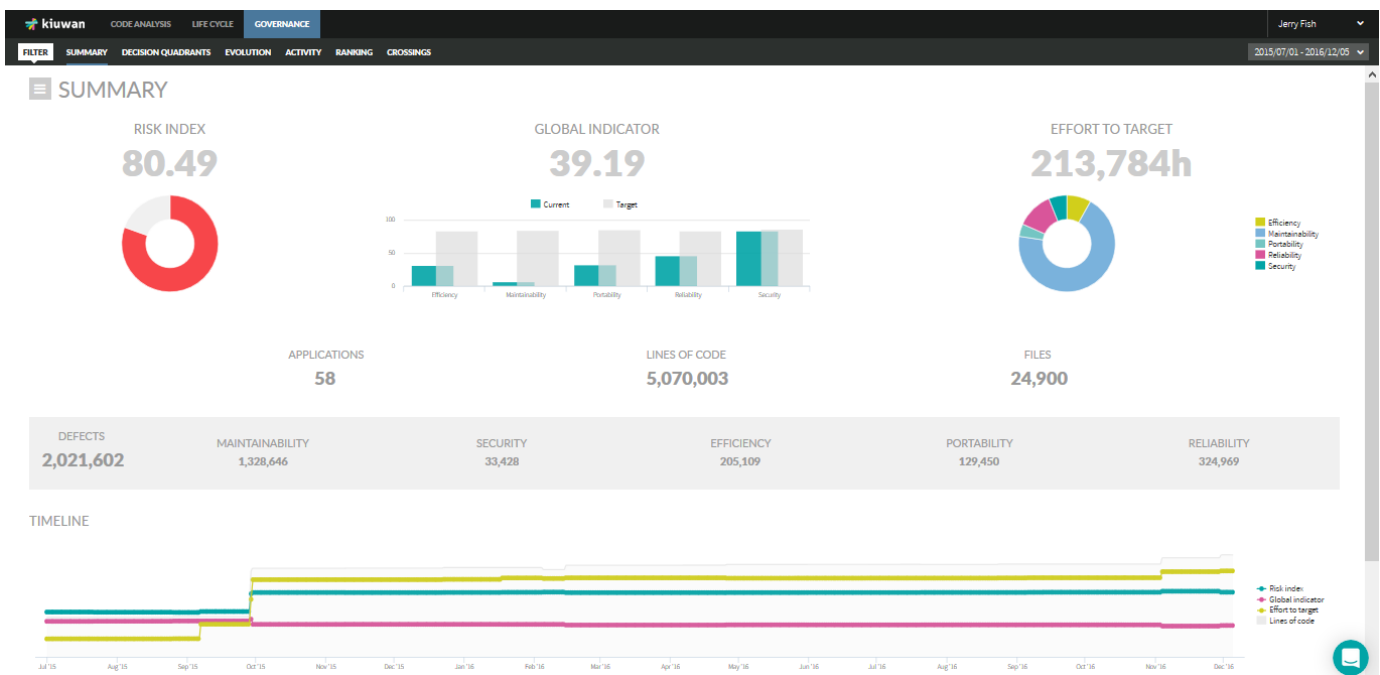
Contents:

- Kiuwan Governance
 - Permissions to access Governance module

Kiuwan Governance

Kiuwan Governance has been designed for *QA Engineers* or *IT Managers*, and allows to see the results of the analysis performed on the application code grouped by portfolios, an essential information for the government of the applications at executive level.


There are four default portfolios to help you manage your providers or development teams activity: **Business value**, **Provider**, **Technology** and **Quality Model**. Besides, you can create all the portfolios you need to sort your applications.



Permissions to access Governance module

By default, only Account Owner can access Governance module.

However, the account owner can grant access to Governance module to any user by selecting any user, clicking on **User Privileges** and checking "**View governance**".

 **IMPORTANT:** By granting "View governance" privilege, the user is allowed to access Governance module, but he/she will only see aggregated data from those applications that have "Read" permission.

USER PRIVILEGES

Manage applications

Manage users

Manage models

Manage audits

Manage reports

Support enabled

View governance

Please visit [User management - Set administration privileges](#) for help on managing administration permissions.

- [Governance Summary](#)
- [Decision quadrants](#)
- [Evolution](#)
- [Activity](#)
- [Ranking](#)
- [Crossings](#)
- [Custom Reports](#)