

# The Downloaded Model does not Support any of the Discovered Languages

- [Problem](#)
  - [GUI mode](#)
  - [CLI mode](#)
- [Solution](#)
- [Related articles](#)

## Problem

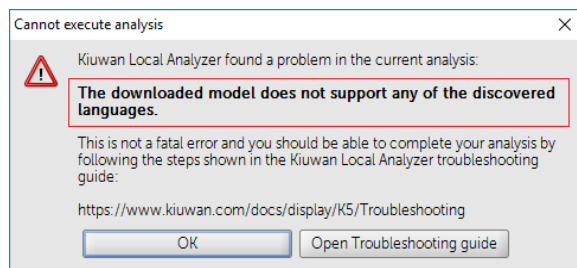
When Kiwan analyzes an application, it uses the model associated with the application (or the one indicated at the time of execution).

This error happens when the model used for the analysis does not contain rules/metrics for the technologies contained in the application.

A typical example is when you are analyzing a Java application and you select the "PHP Symfony" model. As this model only contains rules and metrics for PHP and Javascript, the analysis will not be executed and this error will appear.

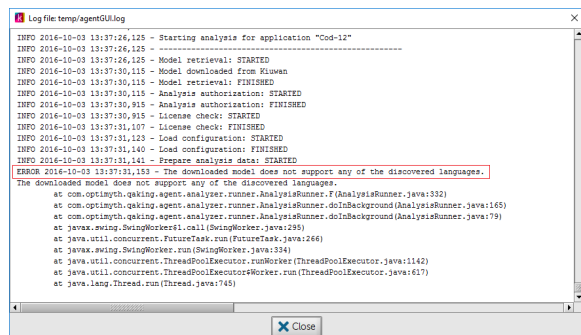
## GUI mode

If you are using Kiwan Local Analyzer in GUI mode, a dialog will open indicating this error:



Click **Analyzer log** to open a window where the log file (temp/agentGUI.log) is displayed.

You will find messages indicating the error.



## CLI mode

If you are using Kiwan Local Analyzer in CLI mode, this error is reported to the standard output.

```
No metric ruleset for technology java. Technology will be ignored.
No metric ruleset for technology jsp. Technology will be ignored.
No metric ruleset for technology html. Technology will be ignored.
Kiuwan Local Analyzer found a problem in the current analysis:
The downloaded model does not support any of the discovered languages.
This is not a fatal error and you should be able to complete your analysis by following the steps shown in the kiuwan local ana
lyzer troubleshooting guide.
https://www.kiwan.com/docs/display/K5/Troubleshooting
Exit code = 15
```

An error code will be returned to the calling process.

Please visit [Local Analyzer Return Codes](#) for further info con return codes.

## Solution

There are different solutions you can apply:

- Select an appropriate model for your analysis that supports the technologies of your application
- Modify the model to include those technologies not currently supported

Read more on managing Models on [Basic Model Management](#) and [Advanced Model Management](#)

## Related articles

- [SSO - Form-based authentication fails](#)
- [SSO - HTTP authentication fails](#)
- [SSO - WIA is not working](#)
- [SSO - Cannot authenticate with credentials](#)
- [Basic Authentication Error when Exporting Action Plan to Atlassian JIRA](#)